

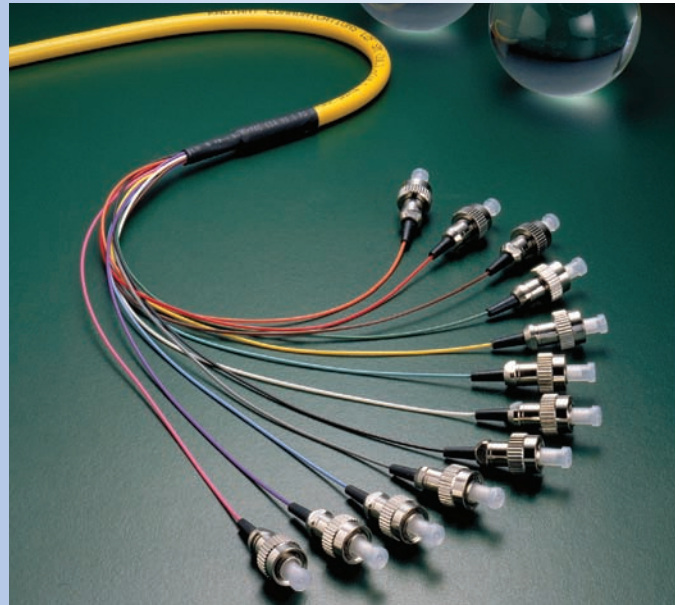
J-MF MULTI-FIBER FAN-OUT PIGTAILS / PATCHCORDS

Features:

- Low insertion loss
- Low back reflection loss
- Easy installation
- Custom defined specifications
- Environmentally stable

Applications:

- Telecommunications
- Local area network
- Fiber to the home
- Fiber optic sensors
- Testing instruments

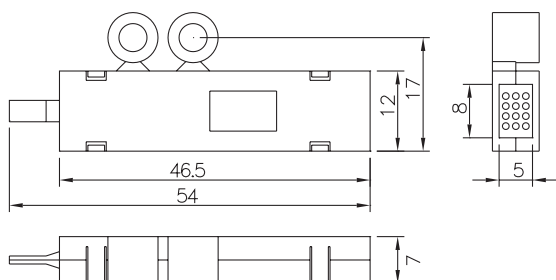


Performance Specifications:

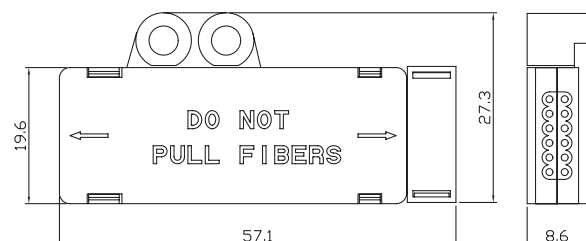
| ITEM | Multi-Fiber Fan-Out Pigtail/Patchcords | | |
|----------------------------|--|-----|---------------------|
| | FC, LC, SC type | | FC/APC, SC/APC type |
| Mode Type | SM | MM | SM |
| Typical Insertion Loss, dB | 0.15 | 0.3 | 0.3 |
| Max. Insertion Loss, dB | 0.25 | 0.4 | 0.5 |
| Typical Backreflection, dB | 50 | - | 62 |
| Min. Backreflection, dB | 48 | - | 60 |

Mechanical Drawings:

Unit: mm



J-MF (0.9 mm type)



J-MF (2.0 mm type)

MULTI-FIBER FAN-OUT PIGTAILS / PATCHCORDS

Ordering Information:

J - MF - - - - - - /

Fiber Type

| | | | |
|---|------------------|---|-------------------------|
| A | Singlemode fiber | R | Singlemode ribbon fiber |
| J | G.657. A1 fiber | X | Others, please specify |
| L | G.657. A2 fiber | I | Singlemode G.655 fiber |
| M | G.657. B2 fiber | F | 50/125µm OM2 |
| N | G.657. B3 fiber | G | 50/125µm OM3 |
| C | 50/125µm | H | 50/125µm OM4 |
| D | 62.5/125µm | | |

Cable Type

| | |
|---|---------------------------------|
| C | Simplex, coated fiber (250µm) |
| L | Simplex, 0.9mm loose tube cable |
| O | Simplex, 2.0mm cable (2.0mm) |
| X | Others, please specify |

Fan Out Fiber Count

| | |
|----|------------------------|
| 04 | 4 cord |
| 08 | 8 cord |
| 12 | 12 cord |
| XX | Others, please specify |

Fan Out Cable Length

| | |
|-----|------------------------|
| X30 | 30 cm |
| X50 | 50 cm |
| 100 | 100 cm |
| 150 | 150 cm |
| XXX | Others, please specify |

Fiber Length (Include Fan Out Length)

| | | | |
|-----|-------|-----|------------------------|
| X50 | 50 cm | 001 | 1 m |
| 002 | 2 m | 010 | 10 m |
| 015 | 15m | XXX | Others, please specify |

Configuration

| | |
|----|-----------|
| SG | Pigtail |
| DB | Patchcord |

Fan Out Cable Connector Type (for both ends)

| | | | |
|----|----------------|----|------------------------|
| AP | FC/APC type | FC | FC type |
| AS | SC/APC type | SC | SC type |
| ST | ST type | LC | LC type |
| AL | LC/APC type | E2 | E2000 type |
| AE | E2000/APC type | MU | MU type |
| NC | None | XX | Others, please specify |