

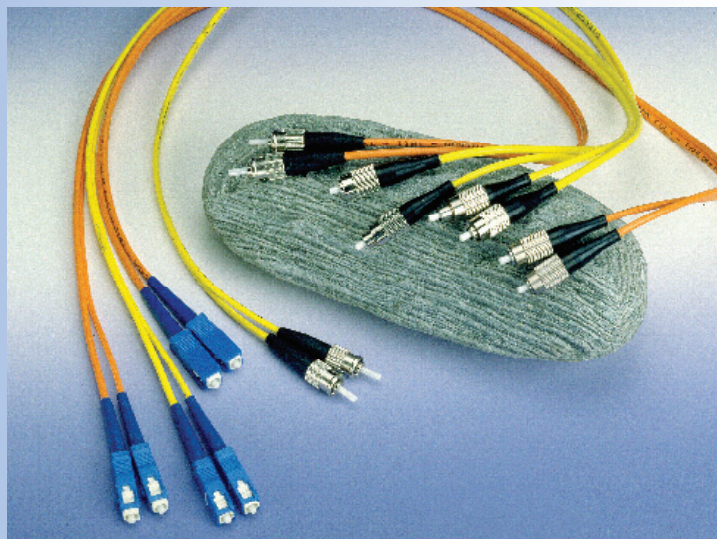
J-XX FIBER PIGTAILS/ PATCHCORDS

Features:

- Low insertion loss
- Low back reflection loss
- Custom defined specifications
- Easy installation
- Environmentally stable

Applications:

- Telecommunications
- Local area network
- Fiber to the home
- Video transmission
- Fiber optic sensing
- Testing instruments
- CATV



Performance Specifications:

ITEM	Fiber Pigtail/Patch cords						
Mode Type	Singlemode					Multimode	
Model Name	J-LC		J-ST			J-FC	
	J-MU					J-SC	
	J-FC					J-ST	
	J-SC					J-LC	
						J-MU	
Grade	U	S	H	S	H	H	A
Typical Insertion Loss, dB	0.15	0.15	0.2	0.25	0.3	0.3	0.5
Maximum Insertion Loss, dB	0.25	0.25	0.32	0.35	0.4	0.4	0.55
Typical Return Loss, dB	55	50	45	48	45	-	-
Minimum Return Loss, dB	50	48	42	45	42	-	-
Operating Temperature, °C	-20 ~ +70						
Fiber Length	To any specified length(ferrule end to ferrule end)						

MODEL NAME	MTRJ Pigtail/Patch cords (J-MR, J-MS)			
Mode Type	Singlemode		Multimode	
Grade	H	A	H	A
Typical Insertion Loss, dB	0.5	0.7	0.3	0.5
Maximum Insertion Loss, dB	0.7	1.0	0.5	0.8
Typical Return Loss, dB	35	30	-	-
Minimum Return Loss, dB	30	25	-	-
Operating Temperature, °C	-20 ~ +70			
Fiber Length	To any specified length (ferrule end to ferrule end)			

FIBER PIGTAILS/ PATCHCORDS

Ordering Information:

J - □□ - □□ - □□ - □ - □□□□ - □□ - □□ / □□

Connector Type

HY	Hybrid	E2	E2000
SC	SC type	AE	E2000/APC
DS	Duplex SC (with clip)	AL	LC/APC
LC	LC type		
DL	Duplex LC (with clip)		
MU	MU type		
DM	MU duplex		
FC	FC type		
ST	ST type		
MR	MT-RJ female type		
MS	MT-RJ male type		
XX	Others, please specify		

Fiber Type

A	Standard singlemode fiber
J	G.657. A1 fiber
L	G.657. A2 fiber
M	G.657. B2 fiber
N	G.657. B3 fiber
B	Dispersion shift fiber (check availability)
C	50/125μm fiber
D	62.5/125μm fiber
F	50/125μm OM2
G	50/125μm OM3
H	50/125μm OM4
I	Singlemode G.655 fiber
X	Others, please specify

Cable Type

C	Simplex, coated fiber (250μm)
T	Simplex, PVC tight buffer cable (0.9mm)
H	Simplex, Hytrel tight buffer cable (0.9mm)
O	Simplex, PVC cable (2.0mm)
Q	Simplex, PVC cable (3.0mm)
E	Duplex, PVC cable (2.0mm)
D	Duplex, PVC cable (3.0mm)
B	Simplex, LSZH semi-tight buffer cable (0.9mm)
F	Simplex, LSZH cable (2.0mm)
I	Simplex, LSZH cable (3.0mm)
K	Duplex, LSZH cable (2.0mm)
N	Duplex, LSZH cable (3.0mm)
X	Others, please specify

Polishing Type

CX	Convex	FT	Flat
----	--------	----	------

Grade

S	Super (singlemode only)	H	High	A	Average
U	UPC (singlemode FC, SC, LC and MU only)				

Configuration

SG	Pigtail
DB	Patchcord

Connector Type (for both ends)

SC	SC type	E2	E2000
DS	Duplex SC (with clip)	AE	E2000APC
AS	SC/APC type	AL	LC/APC
LC	LC type	M2	MU-J
MU	MU simplex type		
DM	MU duplex type		
DL	Duplex LC (with clip)		
FC	FC type		
AP	FC/APC type		
ST	ST type		
MR	MT-RJ female type		
MS	MT-RJ male type		
NC	None		
XX	Others, please specify		

Pigtail/Patch cord Length

Please specify in meters.
If centimeters are desired, then start with "X" followed by 3 digits